

# Project Apollo Destination Moon

The 40th Anniversary of the Apollo program

Apollo 16 Commemoration \* NMSU Campus, Las Cruces \* Friday, March 9th, 2012

On Friday March 9th, 2012 FLARE and SEMAA will celebrate the 40th anniversary of the launch of Apollo 16, the 11th manned mission in the American Apollo program, and the 8th to land on the Moon. The mission launched on April 16th, 1972.

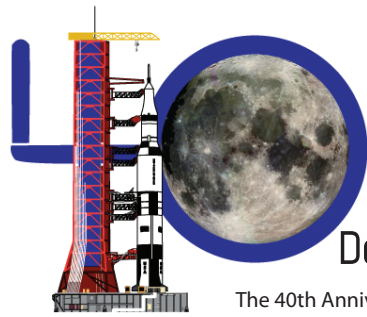
Gene Kranz (NASA White Team Flight Director) and Charlie Duke (Apollo 11 Moon Landing (CAPCOM) and Apollo 16 Lunar Module Pilot, 10th human to walk on the moon) have agreed to be our guests for our Apollo 16 fortieth Anniversary Commemoration.



We will be launching scale model rockets. The commemoration launches will include scale model Historic Rockets of White Sands, Celebration of the 50th Anniversary of John Glenn's Friendship 7 Mercury Atlas Flight, an Historic NASA Manned Space Vehicle Launch Demonstration, and the scale model Apollo 16 Launch Reenactment. These events, plus several of the hands-on science displays and activities will be conducted at the NMSU launch field, just north east of the Aggie Memorial Stadium.

Following the launch we move to the Pan Am Center for a presentation by our special guests, moderated by Mike Shinabery of the New Mexico Museum of Space History. On the Pan Am concourse we will feature an impressive display of space science artifacts from Johnson Space Center, wonderful hands on exhibits from the National Solar Observatory, and from the Las Cruces Museum of Natural History to name a few.

This event is free and open to the public. Please contact Event Director David Kovar (dave@apollo40.org, or call 575-312-2893 if you have any questions about the event. For a complete rundown of the event, visit <http://apollo40.org>



# Project Apollo Destination Moon

The 40th Anniversary of the Apollo program

Apollo 16 Commemoration \* NMSU Campus, Las Cruces \* Friday, March 9th, 2012

On Friday March 9th, 2012 FLARE and SEMAA will celebrate the 40th anniversary of the launch of Apollo 16, the 11th manned mission in the American Apollo program, and the 8th to land on the Moon. The mission launched on April 16th, 1972.

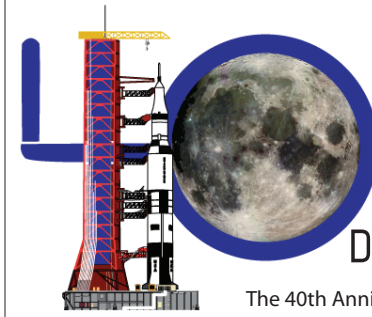
Gene Kranz (NASA White Team Flight Director) and Charlie Duke (Apollo 11 Moon Landing (CAPCOM) and Apollo 16 Lunar Module Pilot, 10th human to walk on the moon) have agreed to be our guests for our Apollo 16 fortieth Anniversary Commemoration.



We will be launching scale model rockets. The commemoration launches will include scale model Historic Rockets of White Sands, Celebration of the 50th Anniversary of John Glenn's Friendship 7 Mercury Atlas Flight, an Historic NASA Manned Space Vehicle Launch Demonstration, and the scale model Apollo 16 Launch Reenactment. These events, plus several of the hands-on science displays and activities will be conducted at the NMSU launch field, just north east of the Aggie Memorial Stadium.

Following the launch we move to the Pan Am Center for a presentation by our special guests, moderated by Mike Shinabery of the New Mexico Museum of Space History. On the Pan Am concourse we will feature an impressive display of space science artifacts from Johnson Space Center, wonderful hands on exhibits from the National Solar Observatory, and from the Las Cruces Museum of Natural History to name a few.

This event is free and open to the public. Please contact Event Director David Kovar (dave@apollo40.org, or call 575-312-2893 if you have any questions about the event. For a complete rundown of the event, visit <http://apollo40.org>



# Project Apollo Destination Moon

The 40th Anniversary of the Apollo program

Apollo 16 Commemoration \* NMSU Campus, Las Cruces \* Friday, March 9th, 2012

On Friday March 9th, 2012 FLARE and SEMAA will celebrate the 40th anniversary of the launch of Apollo 16, the 11th manned mission in the American Apollo program, and the 8th to land on the Moon. The mission launched on April 16th, 1972.

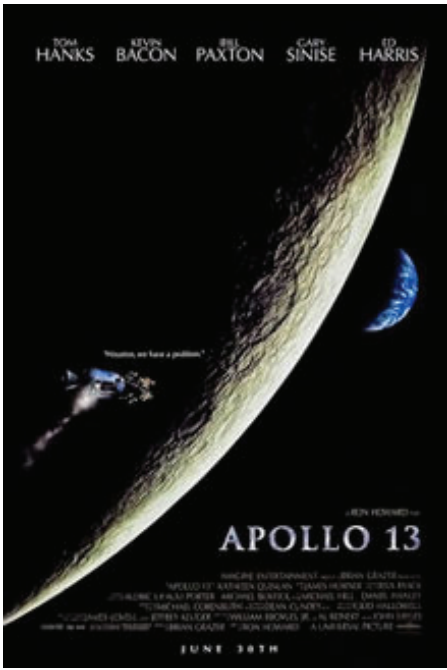
Gene Kranz (NASA White Team Flight Director) and Charlie Duke (Apollo 11 Moon Landing (CAPCOM) and Apollo 16 Lunar Module Pilot, 10th human to walk on the moon) have agreed to be our guests for our Apollo 16 fortieth Anniversary Commemoration.



We will be launching scale model rockets. The commemoration launches will include scale model Historic Rockets of White Sands, Celebration of the 50th Anniversary of John Glenn's Friendship 7 Mercury Atlas Flight, an Historic NASA Manned Space Vehicle Launch Demonstration, and the scale model Apollo 16 Launch Reenactment. These events, plus several of the hands-on science displays and activities will be conducted at the NMSU launch field, just north east of the Aggie Memorial Stadium.

Following the launch we move to the Pan Am Center for a presentation by our special guests, moderated by Mike Shinabery of the New Mexico Museum of Space History. On the Pan Am concourse we will feature an impressive display of space science artifacts from Johnson Space Center, wonderful hands on exhibits from the National Solar Observatory, and from the Las Cruces Museum of Natural History to name a few.

This event is free and open to the public. Please contact Event Director David Kovar (dave@apollo40.org, or call 575-312-2893 if you have any questions about the event. For a complete rundown of the event, visit <http://apollo40.org>



**Project Apollo  
Destination Moon**  
The 40th Anniversary of the Apollo program

4:00 PM  
7:30 PM  
\$20.00

Apollo 16 Commemoration \* Allen Theaters Cineport, Las Cruces \* Thu. March 8th, 2012



**Project Apollo  
Destination Moon**  
The 40th Anniversary of the Apollo program

4:00 PM  
7:30 PM  
\$20.00

Apollo 16 Commemoration \* Allen Theaters Cineport, Las Cruces \* Thu. March 8th, 2012



**Project Apollo  
Destination Moon**  
The 40th Anniversary of the Apollo program

4:00 PM  
7:30 PM  
\$20.00

Apollo 16 Commemoration \* Allen Theaters Cineport, Las Cruces \* Thu. March 8th, 2012

Allen theaters have donated the use of a 230 seat theater for a special showing of the movie Apollo13 on Thursday March 8th, 2012. Gene Kranz (NASA White Team Flight Director) and Charlie Duke (Apollo 11 Moon Landing (CAPCOM) and Apollo 16 Lunar Module Pilot, 10th human to walk on the moon) will address our audience in a discussion



of the Apollo program. Mike Shinabery, Education Specialist at the New Mexico Museum of Space history, will moderate the discussion.



Tickets are \$20.00 per seat. The Showings will be at 4:00 and 7:30pm. Tickets must be purchased in advance on line at <http://apollo40.org>. Tickets will not be sold by Allen Theaters and will not be available the day of the shows.

The manned Space Programs reached into the 21st century and pulled back a decade to do what was, in fact, impossible to do in the 20th. This is your chance to meet two of the celebrated pioneers of that era.

All proceeds from the ticket sales will be donated to a favorite charity on behalf of Gene Kranz, and to the Astronaut Scholarship foundation on behalf of Charlie Duke. The Fellowship of Las Cruces Area Rocketry Enthusiasts (FLARE) is a non-profit corporation registered in the State of New Mexico. <http://FLARE-Rocketry.com>

Allen theaters have donated the use of a 230 seat theater for a special showing of the movie Apollo13 on Thursday March 8th, 2012. Gene Kranz (NASA White Team Flight Director) and Charlie Duke (Apollo 11 Moon Landing (CAPCOM) and Apollo 16 Lunar Module Pilot, 10th human to walk on the moon) will address our audience in a discussion



of the Apollo program. Mike Shinabery, Education Specialist at the New Mexico Museum of Space history, will moderate the discussion.



Tickets are \$20.00 per seat. The Showings will be at 4:00 and 7:30pm. Tickets must be purchased in advance on line at <http://apollo40.org>. Tickets will not be sold by Allen Theaters and will not be available the day of the shows.

The manned Space Programs reached into the 21st century and pulled back a decade to do what was, in fact, impossible to do in the 20th. This is your chance to meet two of the celebrated pioneers of that era.

All proceeds from the ticket sales will be donated to a favorite charity on behalf of Gene Kranz, and to the Astronaut Scholarship foundation on behalf of Charlie Duke. The Fellowship of Las Cruces Area Rocketry Enthusiasts (FLARE) is a non-profit corporation registered in the State of New Mexico. <http://FLARE-Rocketry.com>

Allen theaters have donated the use of a 230 seat theater for a special showing of the movie Apollo13 on Thursday March 8th, 2012. Gene Kranz (NASA White Team Flight Director) and Charlie Duke (Apollo 11 Moon Landing (CAPCOM) and Apollo 16 Lunar Module Pilot, 10th human to walk on the moon) will address our audience in a discussion



of the Apollo program. Mike Shinabery, Education Specialist at the New Mexico Museum of Space history, will moderate the discussion.



Tickets are \$20.00 per seat. The Showings will be at 4:00 and 7:30pm. Tickets must be purchased in advance on line at <http://apollo40.org>. Tickets will not be sold by Allen Theaters and will not be available the day of the shows.

The manned Space Programs reached into the 21st century and pulled back a decade to do what was, in fact, impossible to do in the 20th. This is your chance to meet two of the celebrated pioneers of that era.

All proceeds from the ticket sales will be donated to a favorite charity on behalf of Gene Kranz, and to the Astronaut Scholarship foundation on behalf of Charlie Duke. The Fellowship of Las Cruces Area Rocketry Enthusiasts (FLARE) is a non-profit corporation registered in the State of New Mexico. <http://FLARE-Rocketry.com>